



Work & Learning Network 2024

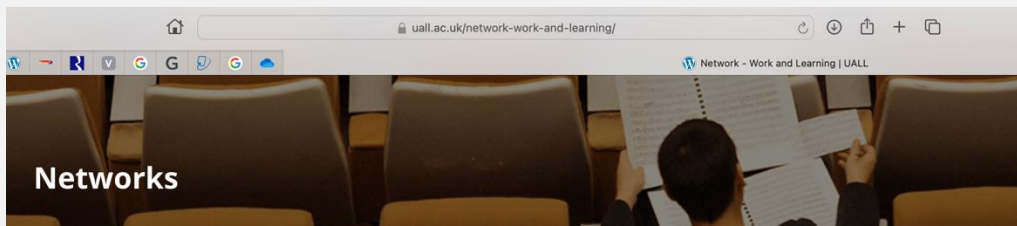
Universities Association for Lifelong Learning / Scutrea
2nd of July, 2024 SOAS University of London UK

Welcome to our workshop 2nd July

- Agenda
- Introduction to Network – Dr Paula Nottingham
- Leadership and policy future practice - Dr Elda Nikolou-Walker
- Valuing the practitioner - Paula
- Dr Peter Dwyer- NHS apprenticeship positive change
- Dr Lovelin Obi - innovative assessment in apprenticeship
- Dr Stavroula Bibila - assessment theoretical considerations
- Dr Joanne Gosling- engaging with employers
- 2nd half Big Questions - Dr Joanne to introduce section / Peter's provocation about current climate and setting the scene for change.
- Prof Carol Costley - rapporteur
- Invitation to join in future conversations

Join our mailing list - <https://www.workandlearningnetwork.org/contact-us>

W&L Network practitioners and researchers (UALL + UVAC +)



SEEC

Student Experience

Work and Learning

Credentialling

Lifelong Learning & Place

Work and Learning

The Work and Learning Network promotes learning in, through and for work (paid or unpaid).

We network and share with members and wider communities that support a range of professional practice. The network provides seminars, workshops, conferences and other events and engages with for example, work-related learning, degree apprenticeships, placements, internships, practitioner research and professional doctorates.

Our vision is to be a vibrant practitioner led network, recognised for its excellence, that advocates Higher Education (HE) in the workplace and empowers learners through encouraging lifelong learning goals.

Our mission is to:

- provide inspiration and leadership through the development and sharing of work and learning professional practice as an important and integral part of academic awards.
- encourage and promote values, research, scholarly activity and professional practice that encourages the development of work and learning as a critical pedagogy.
- promote networking and events for members and work with national lobbies to influence the direction of work and learning in HE.

Network goals:

- To disseminate good practice in relation to the development, facilitation and assessment of work and learning practice within HE through learning in, for and through a wide range of work-based learning, work-integrated and apprenticeship (higher, degree and graduate) programmes including undergraduate, postgraduate and doctoral levels.
- To provide events and network opportunities for HE colleagues to support staff development
- To promote and disseminate research in the field of work and learning
- To promote the status of the use of work and learning practice in HE, with employers, policy makers, professional groups and other stakeholders through UALL.

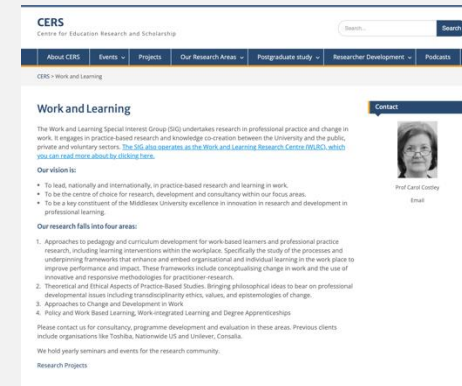
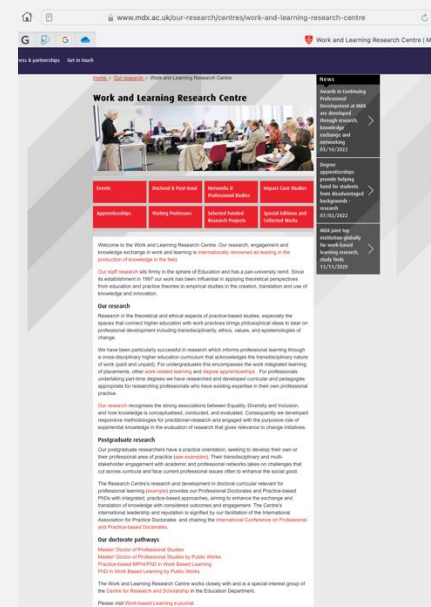
Dr Paula Nottingham (UALL Convenor)

Dr Eida Nikolou-Walker (UALL Convenor)

For more information:

- Visit the work and learning network website
- Visit the Work and Learning Research Centre

<https://uall.ac.uk/network-work-and-learning/>
<https://www.workandlearningnetwork.org>
<https://mdxcers.com/higher-education/>



Expert Seminars 22-23



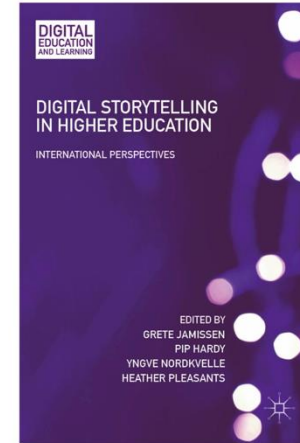
**Middlesex
University
London**

'Activism as Leadership: Black feminist politics of resistance, impact and change'

Tuesday 25th Oct 2022 2pm

Dr Jan Etienne
Chair, Womanism, Activism and Higher Education
Research Network
Birkbeck, University of London

Sponsored by the Special Pathways DProf and
Work and Learning Research Centre SIG/CERS



Work and Learning Research Centre
SIG/CERS Presents:

Digital Storytelling: A method for
poetic reflection in higher education

led by Yngve Nordkvelle Professor of
Education at Inland Norway
University of Applied Sciences,
Lillehammer

19th of May 2023 11am - 12:30pm
(UK)



Work and Learning Research Centre
SIG/CERS Presents:

Seminar Series 2022-23

**'Cognitive Overload and the
Work Place: Protecting our
Brains in a World of Too Much'**

with Professor Sarah Corrie



Work and Learning Research Centre
SIG/CERS Presents:

Seminar Series 2022 - 23

**'Liminality, Uncertainty and
Troublesome Knowledge in
Learning at Work'**

20th June 11am - 12:30pm (UK) Virtual Event

With Professor Karen Evans



Expert Seminars 23-24 (higher education futures)



Work and Learning Research Centre / CERS
Seminar Series 2023-2024

5 December 2023 10:30am-12:00 (UK) Virtual Event

Initiating change: A Degree Apprenticeship
for the Creative Industries

with Dr Tim Riley



Higher Education / CERS
Tuesday 19 March 2024 11am-12:30 (UK)
Free Online Research Event

Seeing your research in a broader picture:
learned societies within research into higher education
and some considerations about methodology
with Dr Martin Gough
University of Liverpool Centre
Co-Convenor of the SRHE Postgraduate Issues Network

Eventbrite link: <https://tinyurl.com/3uf5szzk>



**Work and Learning / CERS
Seminar Series 2023-2024**

8 February 2024 11am-12:30 (UK)
Free Virtual Research Event

Learning for impact at work

with Professor Jonathan Garnett
Director Garnett Professional Development Ltd.



Work & Learning / Higher Education / CERS
Tuesday 14 May 2024 11am-12:30 (UK)
Free Online Research Event

Title: What will doctoral education look like
in the future?
with Prof Hala Mansour
Royal College of Art

Eventbrite link: <https://tinyurl.com/5dsut6nu>

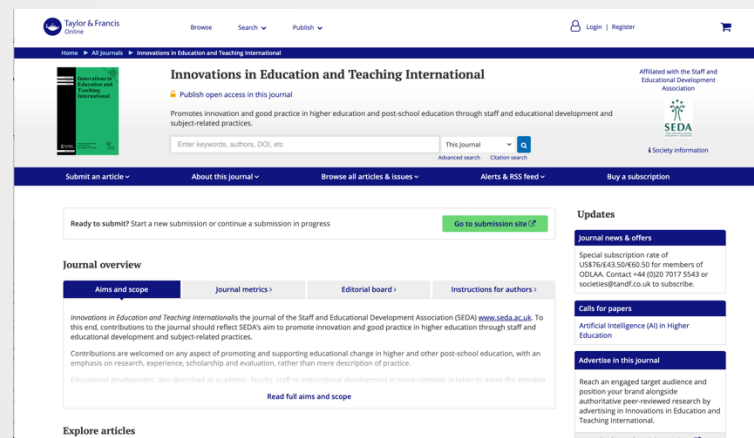
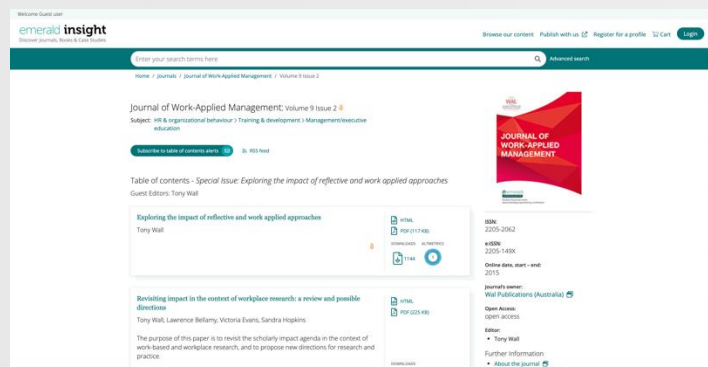
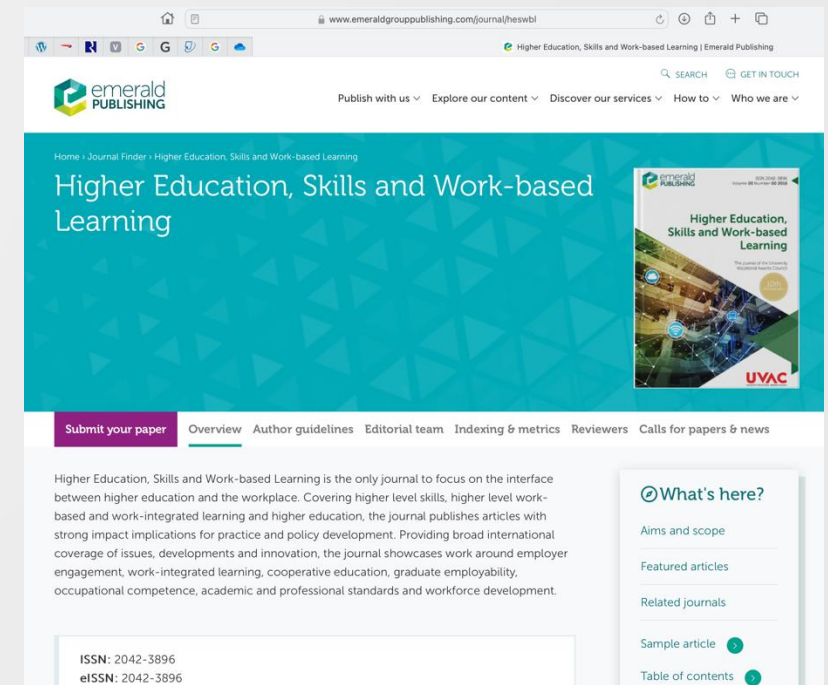
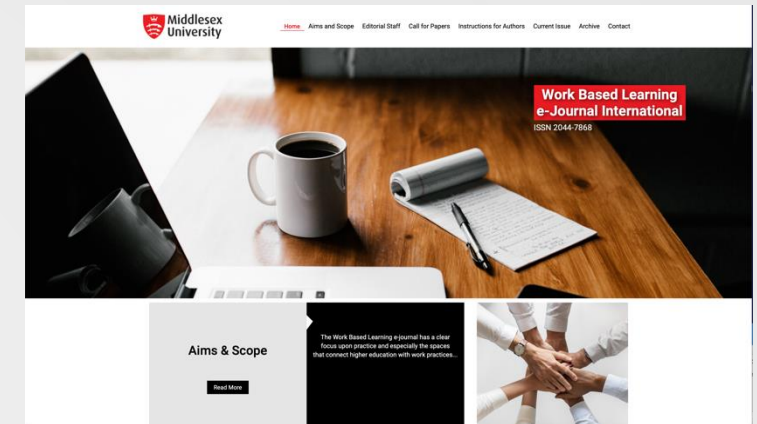
Practitioner research & publishing

<https://www.wblearning-ejournal.com/en/home>

<https://www.emeraldgrouppublishing.com/journal/heswbl>

<https://www.emerald.com/insight/publication/issn/2205-2062/vol/9/iss/2>

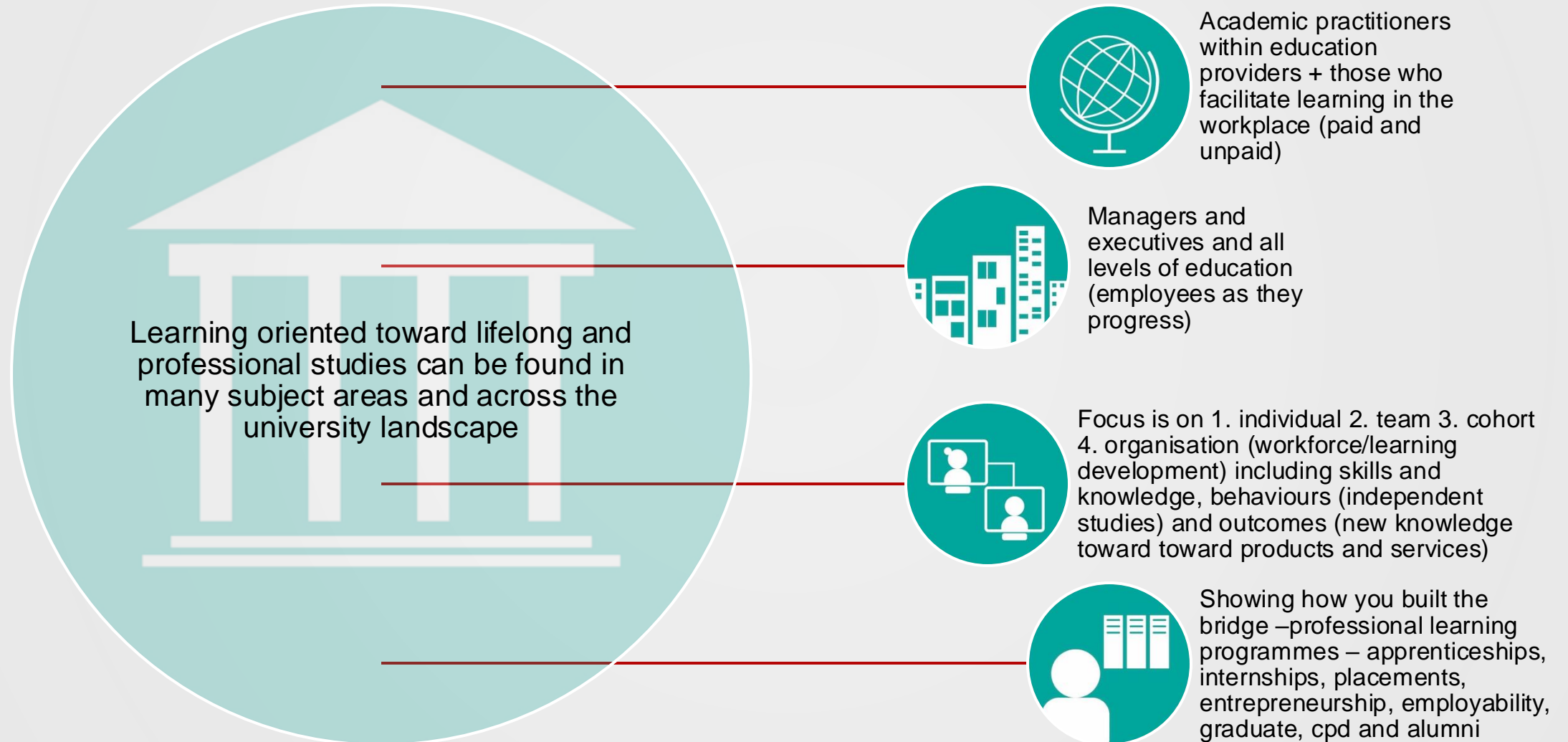
<https://www.tandfonline.com/journals/riie20>



Leadership within Education and Policy

- The Concept Of Educational Leadership in 'Work Based Learning': Challenges & Opportunities
- To Outline & Assess Policy For WBL Educational & Professional Leaders
- To Promote Research & WBL Educational Leaders (Collaboration)
- To Suggest New (and Updated) Qualifications on WBL Educational Leadership

Paula – valuing the academic practitioner





THANK YOU

Join our mailing list - <https://www.workandlearningnetwork.org/contact-us>

Dr Paula Nottingham p.nottingham@mdx.ac.uk